

# Roadmap to SWEEP!

The California Department of Food and Agriculture (CDFA) is offering first come, first served funding for the State Water Efficiency and Enhancement Program (SWEEP). The program's objective is to provide financial incentives for California agricultural operations to invest in irrigation systems that save water and reduce GHG emissions. Awarded applicants will receive up to \$200,000 in funding.

**Applications close January 18th, 2022, or earlier if funds run out.**

**Project Implementation begins Summer 2022.**

**Answer a few questions below to see if you qualify!**

## START HERE

1. Applicants must be at least 18 years old and their project must be on a California agricultural operation, with a business address and location in the state of California. Marijuana growers are not included.

**DOES THIS APPLY TO YOU?**



## A few other important things before you apply:

**You will receive special consideration if:**

- You are defined as a Priority Population that is located in a low-income community or identify as a member of a Socially Disadvantaged group.

**SWEEP has allotted 25% of the total funding to support projects that benefit Priority Populations**

- You have attended or are committed to attend irrigation training during the course of the project.
- You will reduce groundwater pumping in a critically over-drafted water basin



**Have you received SWEEP funding before?**

**NO** | New applicants receive extra consideration!  
**YES** | You can still apply as long as you have not received a cumulative SWEEP award amount of more than \$600k. Funding cannot be used to build upon any prior SWEEP projects on a previously funded APN. However, the same APN can be used for different project components funded by other state and federal programs.

## Documentation Needed to Apply

**\*\*\*PUMP TEST NEEDED FOR ALL PROPOSED PROJECTS\*\*\***

- Energy records from 12 consecutive months (previous calendar year)
- Utility Bills
- Fuel Receipts
- Operation Log
- Project Design
- Completed Budget Worksheet
- Completed SWEEP Irrigation Water Savings Assessment Tool
- Completed GHG Calculator Tool

## Project Commitments

- Pre and post project site visits and reviews
- 3 years of partner monitoring after project completion
- 10 years commitment to maintaining implemented practices

**Read on for an overview of application requirements or visit the official SWEEP site.**

# COMMON SWEEP PROJECTS

**Check out the full list of supported projects!**



**\$2 million of funding is reserved for projects that install Sub-Surface Drip for Dairy Effluent!**

- Soil moisture monitoring
- Drip systems
- Switching to low pressure irrigation systems
- Pump retrofits
- Variable frequency drives
- Installation of renewable energy

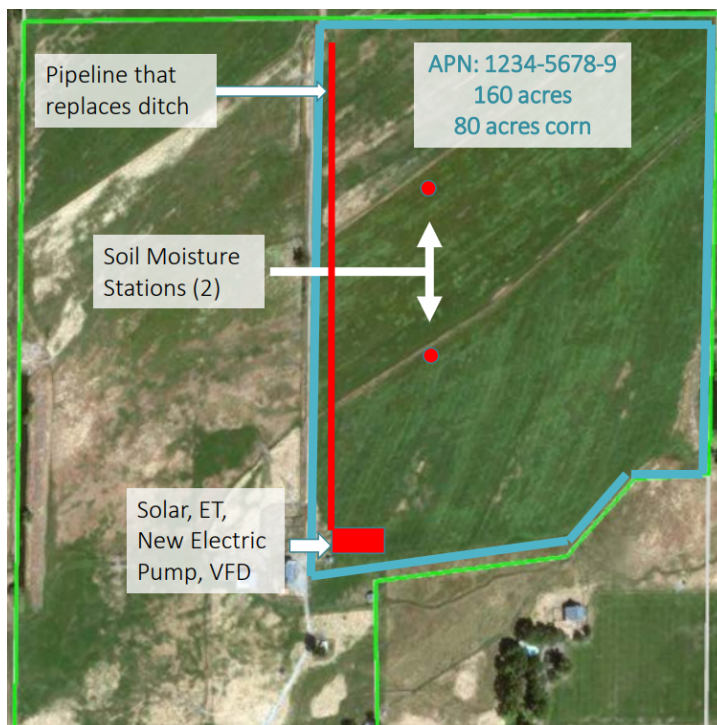
Visit the [CDFA YouTube Channel](#) to learn more about previously funded projects!

## APPLICATION DETAILS

### Project Design

- Your project design must include the following elements:
- Labeled assessor's parcel numbers (APN)
- Detailed project schematic
- Location of existing flow meters and or flow meters proposed to be installed through the project
- Pertinent agronomic information (crop & water source)
- Location, engineering & energy output specifications of any proposed renewable energy installations
- Holistic project overview using aerial imagery software

**Aerial imagery software may be as simple as a screenshot from Google Earth with your project design drawn over the image.**



This image was provided by CDFA in their public question and answer session as an example of a complete project overview using aerial imagery software and labeled project design elements

## **SWEEP Irrigation Water Savings Assessment Tool**

Applicants must complete both the “before” tab of the calculator to estimate baseline water use on the field with the current crop and irrigation practice, and the “after” tab to estimate the projected water savings after project installation.



**Make sure to complete the SWEEP Irrigation Water Savings Assessment Tool First!**

**"Estimated Water Savings" is an input for the GHG Calculator that you will take from your Water Savings Assessment**

## **SWEEP Greenhouse Gas (GHG) Calculator Tool**

Applicants must use energy records from the previous calendar year (January through December) and other on-farm specifications (e.g. pump tests) to complete the calculator tool.

You can find more information on pump tests & see an example by [clicking here](#).

**Along with the completed calculator, applicants must submit explanations & documentation used to calculate GHG reduction to allow a reviewer to replicate the calculations.**

## **Budget Worksheet**



**Applicants must submit a SWEEP Budget Worksheet including a full description of all project components.**

A complete budget will include all of the following:

- Itemized List of Supplies & Equipment
  - Supplies are items less than \$5,000
  - Equipment are items greater than \$5,000
- Labor
  - Include Contractor's Hourly Rate and the Average Hours Per Week
- Other
  - Ex: Equipment Rentals, permits, etc.

**Labor provided by the applicant OR the applicant's employees are not allowable costs & should be considered match.**

**Labor can account for no more than 25% of your total project budget.**

### **Unallowable Costs include:**

- Project Design Costs & pump efficiency tests
- Costs associated with Technical Assistance and Project Management

*See Guidelines for more details on unallowable costs*

## Scoring Rubric

Applications that receive a minimum of 30/50 points may receive funding.

Criteria	Maximum Points
Merit and Feasibility	12
Water Savings & Calculations	12
Greenhouse Gas Reductions & Calculations	12
Budget	8
Applicant Not Previously Awarded	3
Additional Considerations	3
Total	50

**Click here to review Appendix D, which contains the detailed scoring matrix!**



Still have questions?

Visit [CDFA's Frequently Asked Questions Page](#) to learn more

## Tips to Applicants

- Remember that your proposed projects must show a reduction in BOTH water usage and greenhouse gas emissions.
- Competitive applications will focus on [GHG](#) and [Water Savings Calculators](#)



**These two sections make up 24 out of 50 points!**

- Check to see if you qualify as a Socially Disadvantaged Farmer or Rancher and/or are located in a [Priority Population](#).
- Match (i.e. if you are able to provide out-of-pocket funding for elements of your project) is not given extra consideration but should still be included in your budget to explain the full financial scope of the project.
- Fill out the Application Checklist in [Appendix A](#) before you submit.
- Read the Application Overview in [Appendix B](#).
- You can find the Payment Rates for various practices in [Appendix C](#). There rates will provide examples of reasonable costs associated with elements of a project and can be used to inform your budget.

# APPLY NOW

**Need help with your application?  
Reach out to your local RCD.**

**Local RCD Contact | Name | Email | Phone  
Upcoming Workshop Dates  
Pump Test Provider Information**

CDFA cannot assist in the preparation of grant applications.  
For general questions, email: [cdfa.sweep@cdfa.ca.gov](mailto:cdfa.sweep@cdfa.ca.gov)



This document was made possible with funding from the CA Department of Water Resources